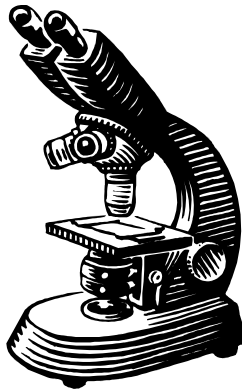


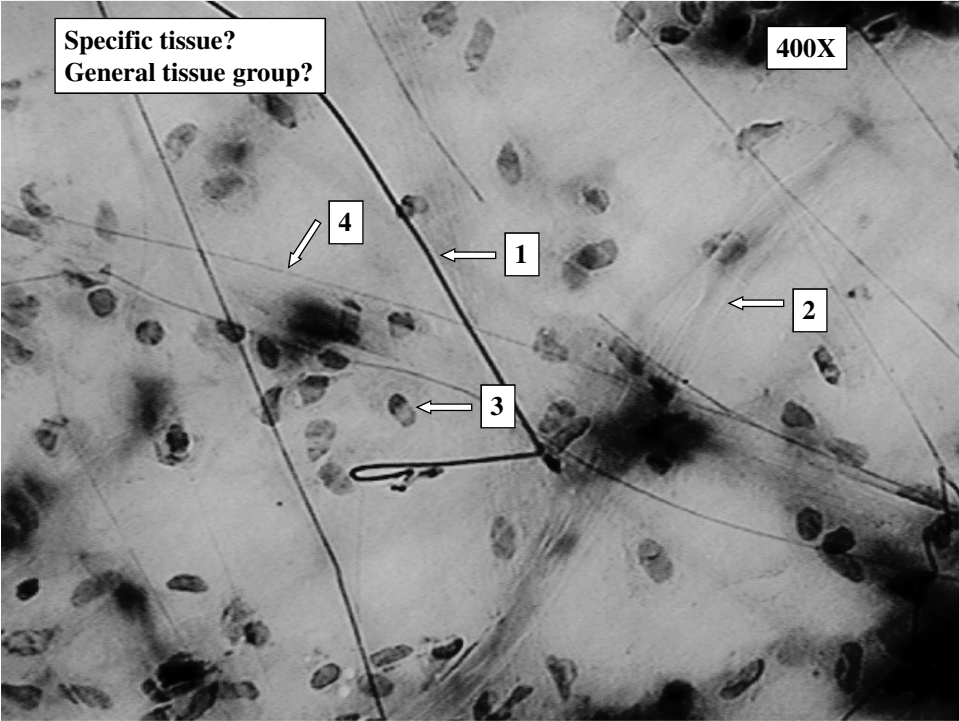
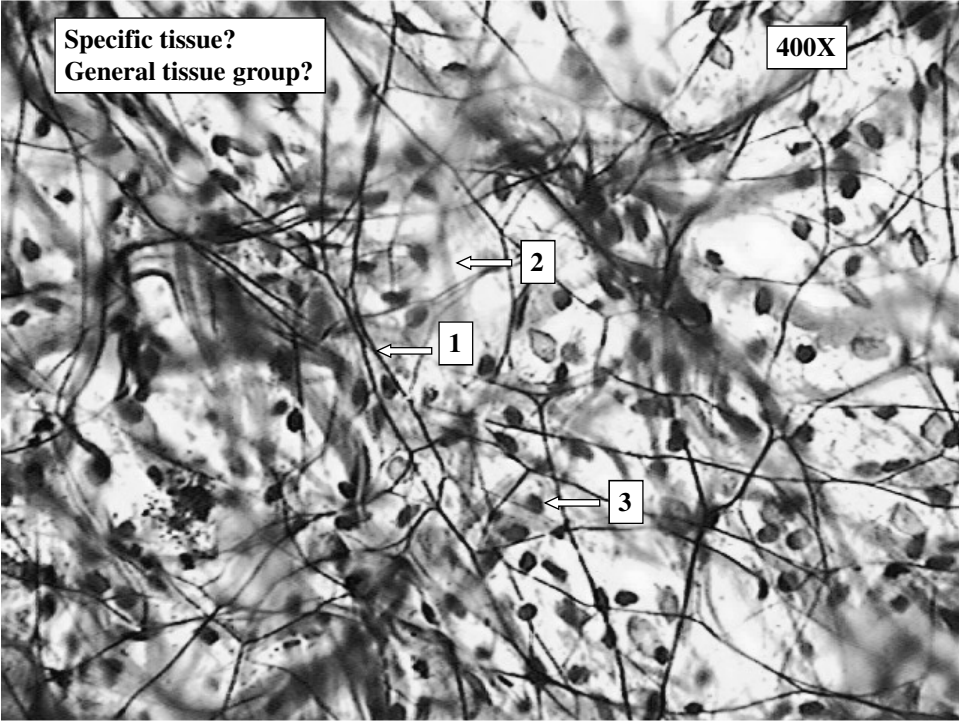
Bio& 241 A&P

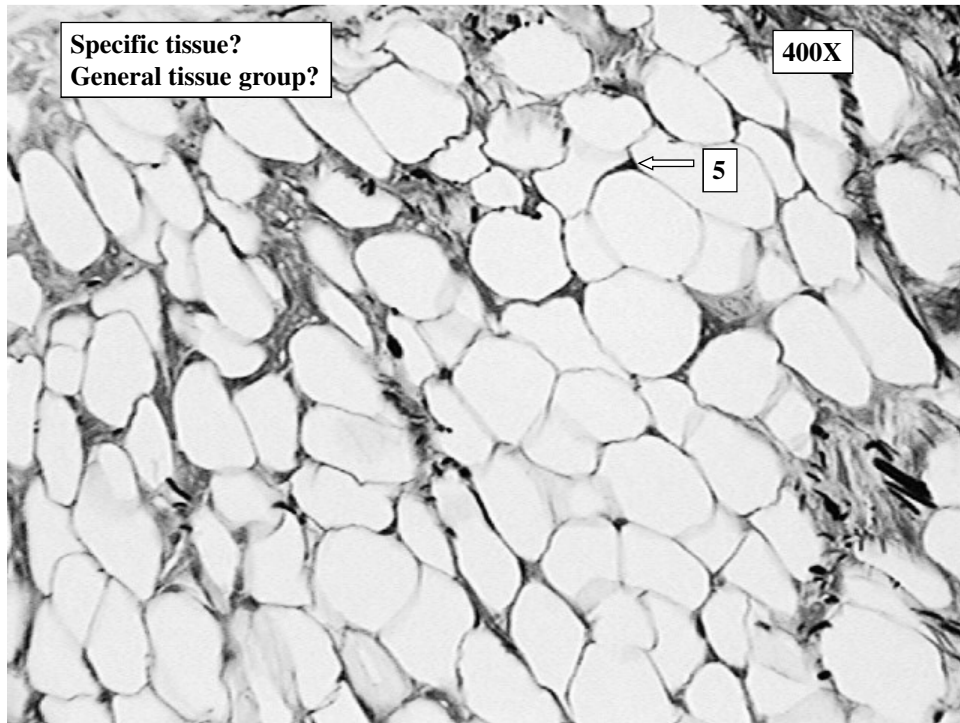
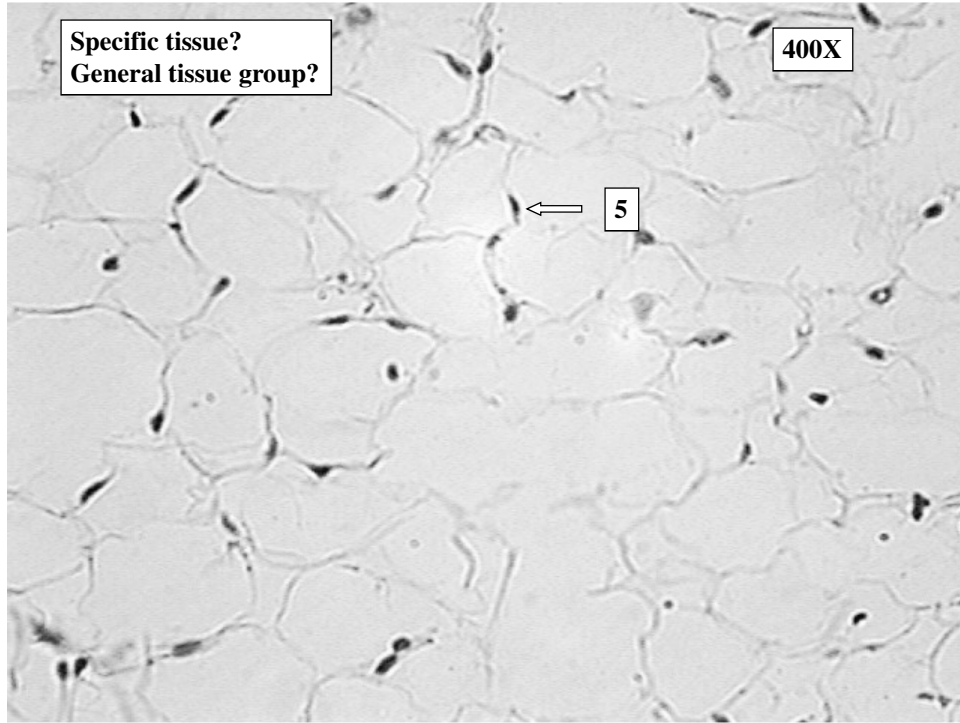
Unit 1 / Lab 3

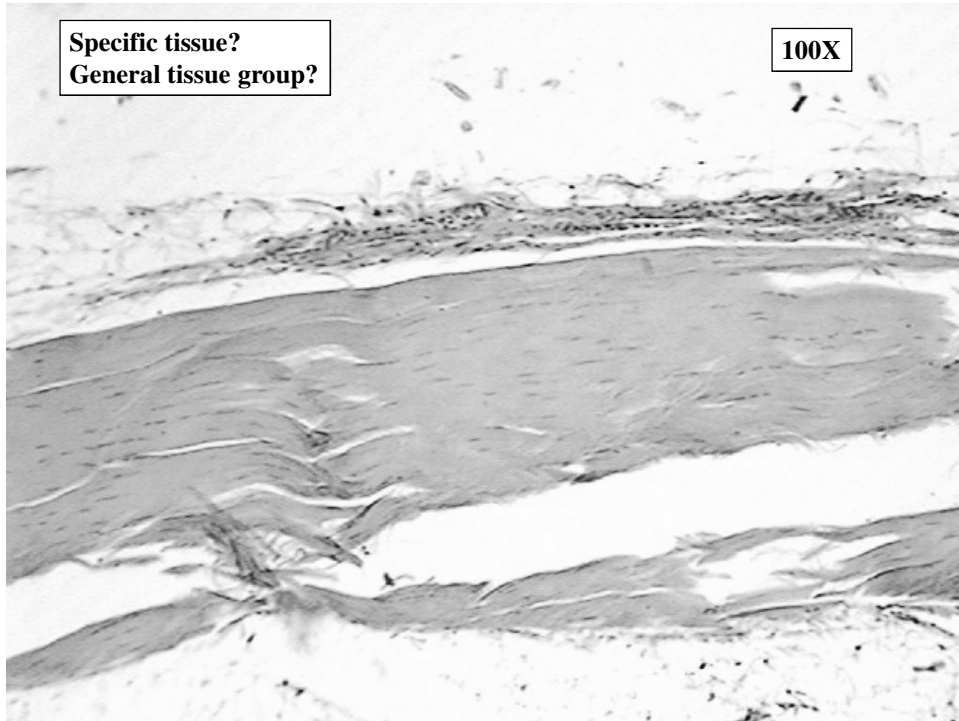
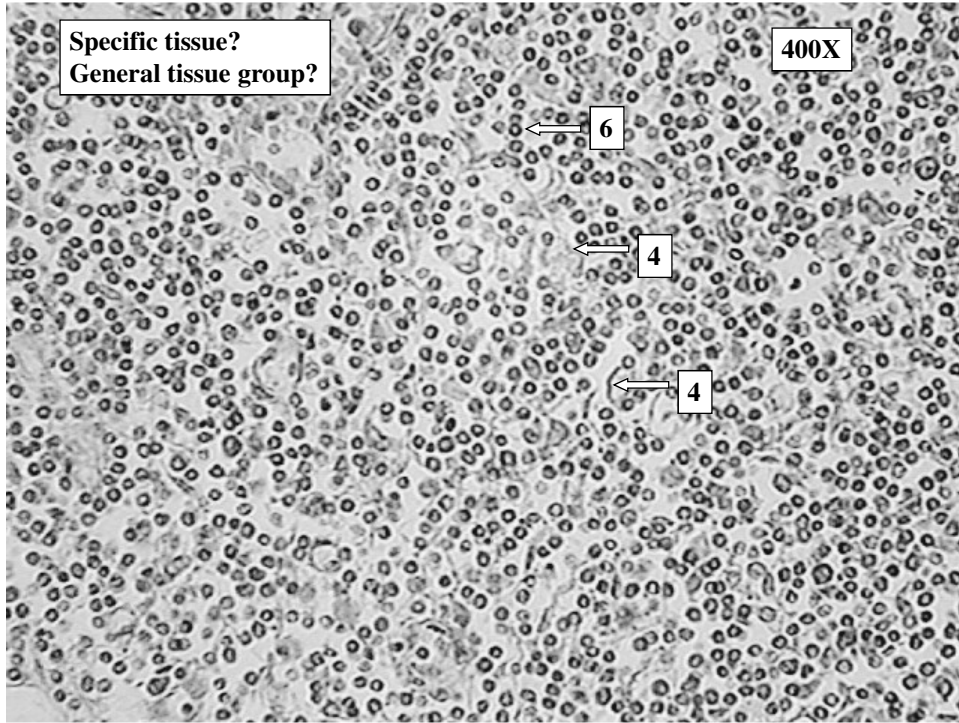


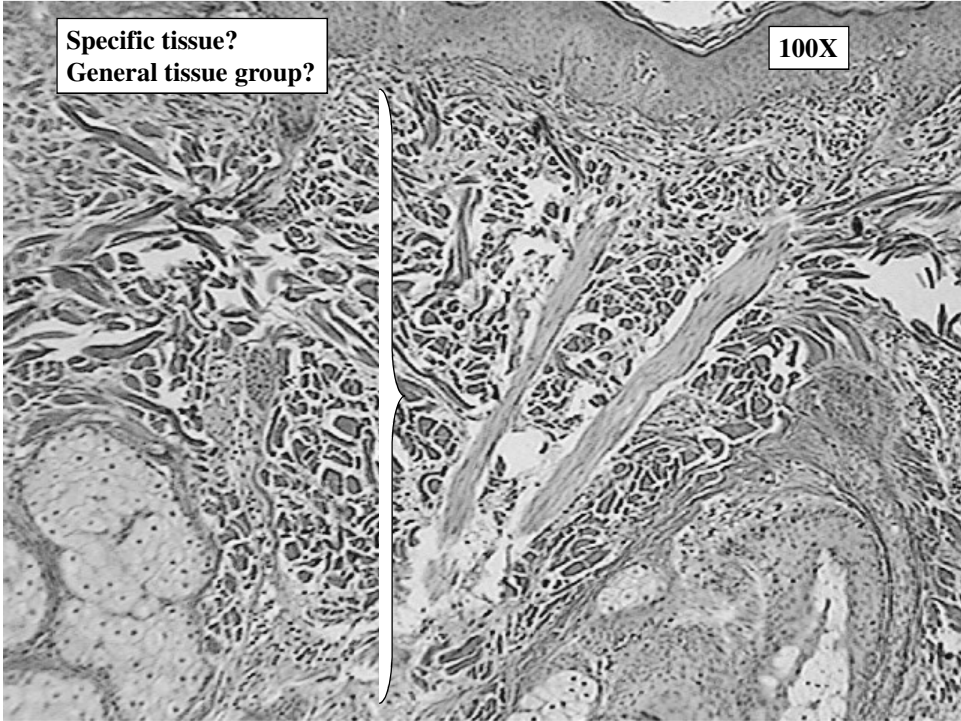
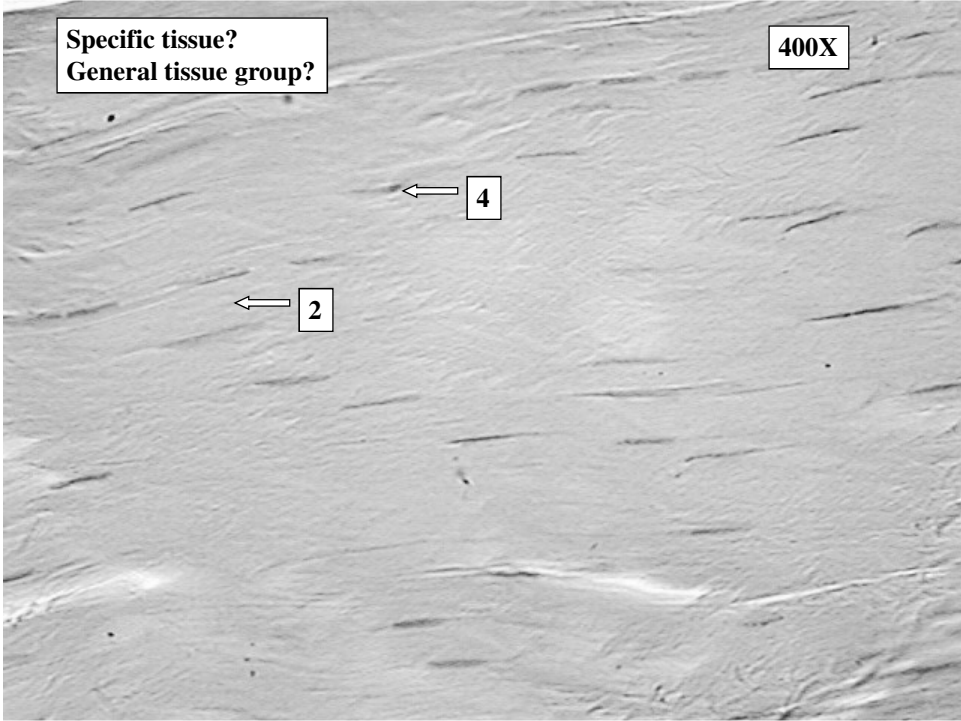
Histology Slides for the Epithelial, Connective and Integumentary Tissues

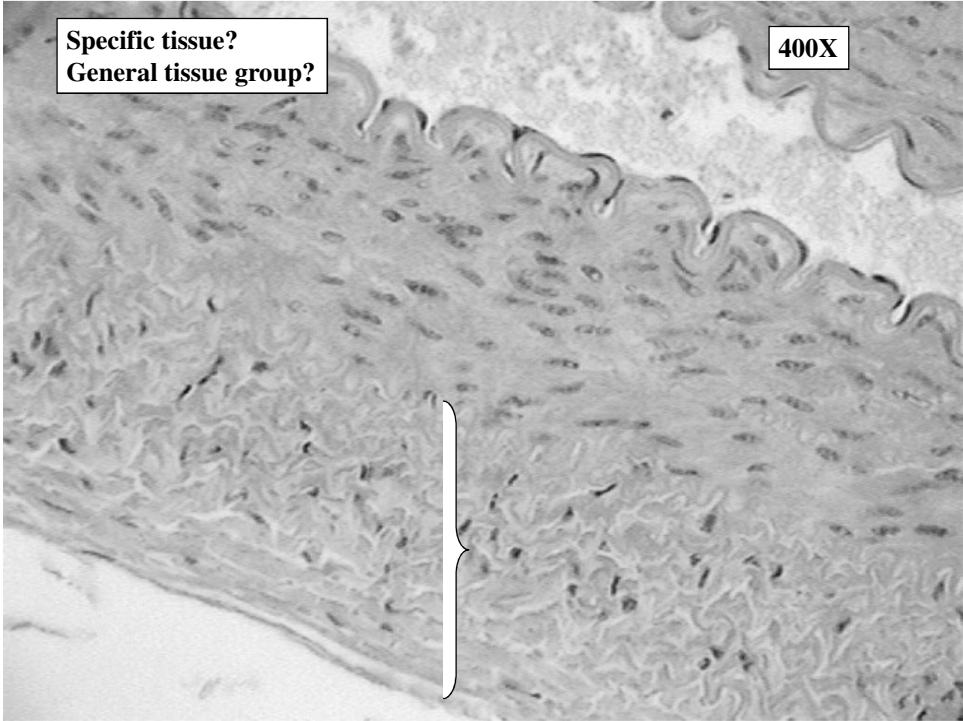
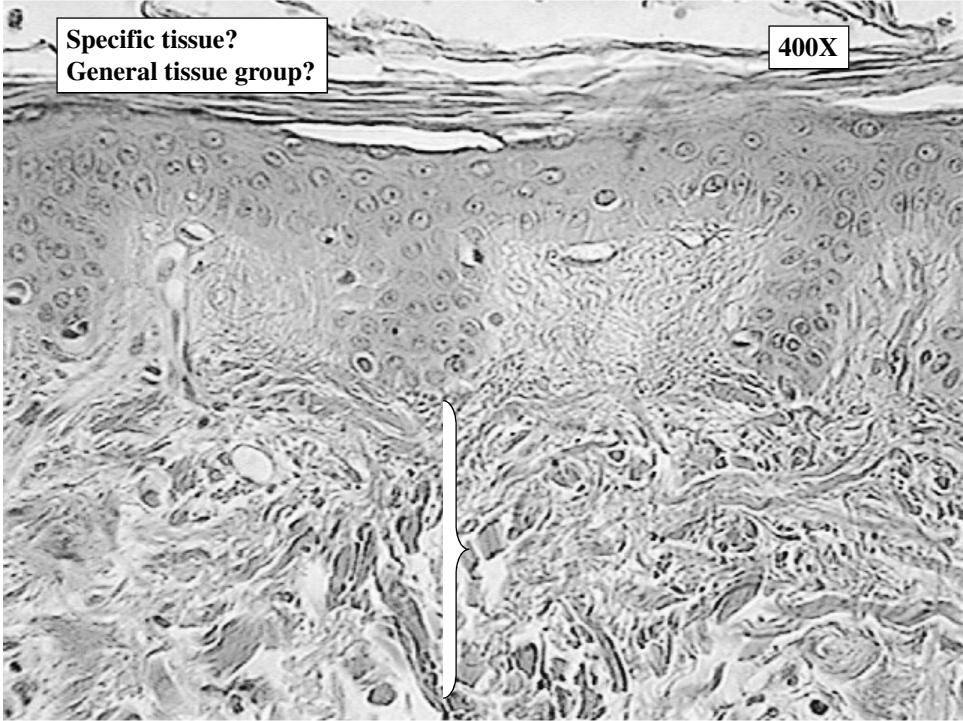
- **Slides are presented in order of magnification**
- **As you view the following slides, make sure you can accomplish these goals:**
 - 1. Can you identify the tissue observable on the slides?**
 - 2. Can you identify the specific structures or layers indicated by the numbered arrows or brackets?**
- **At the end of a sequence you will find the answers to the above for each vessel and layer.**

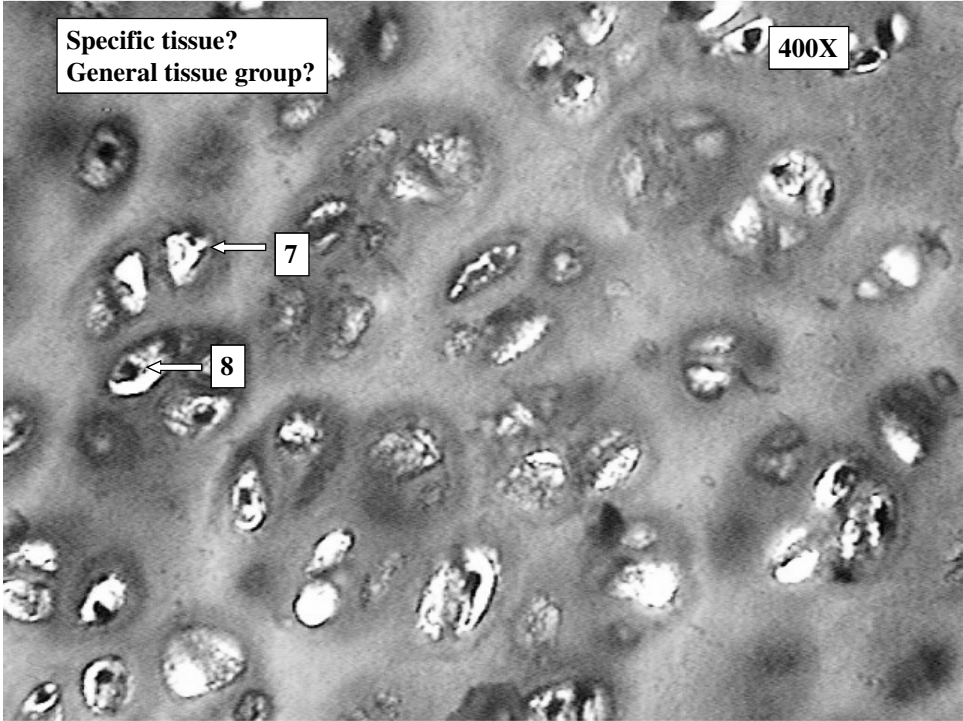
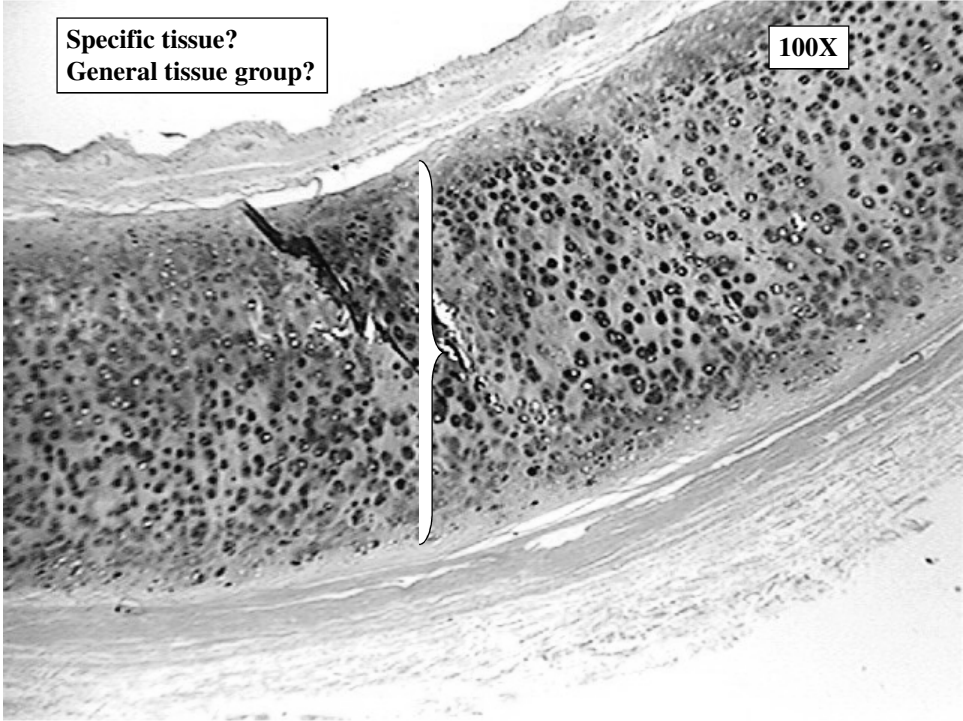


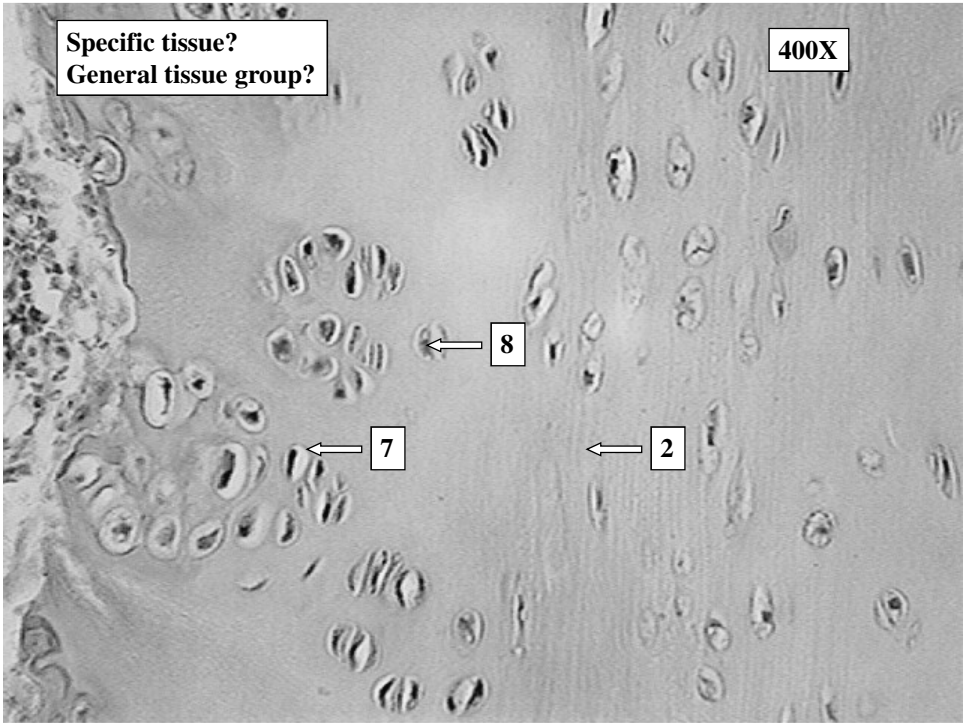
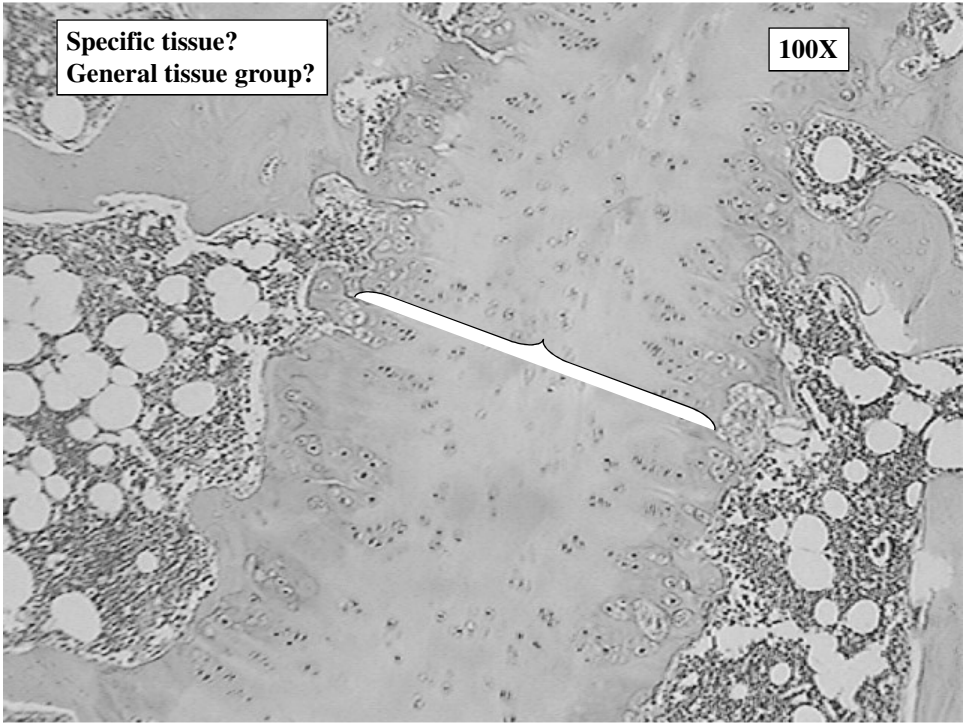


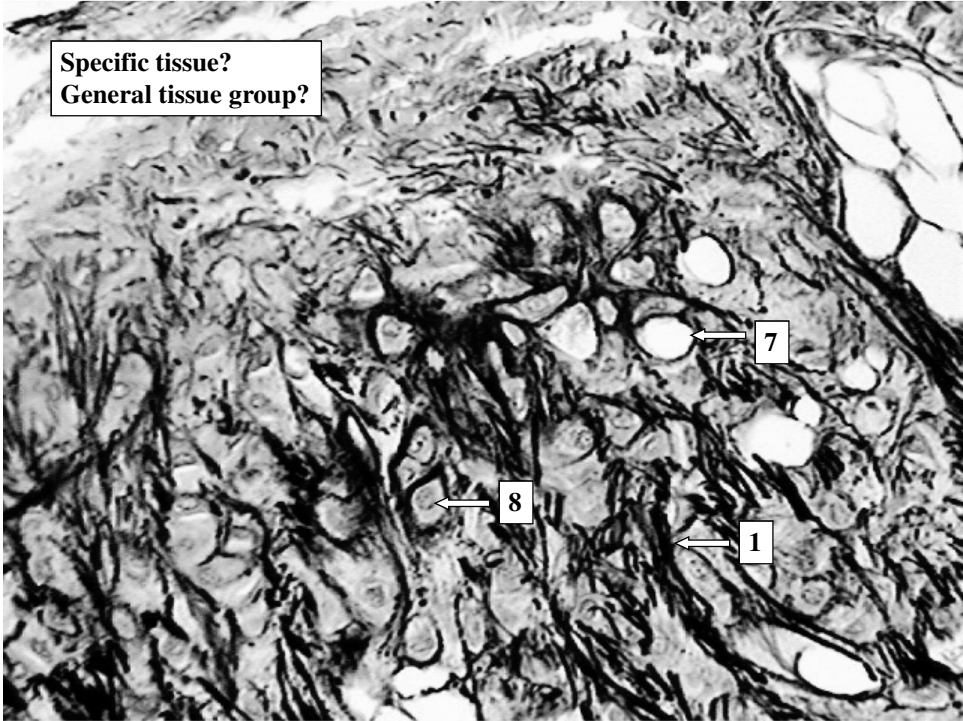
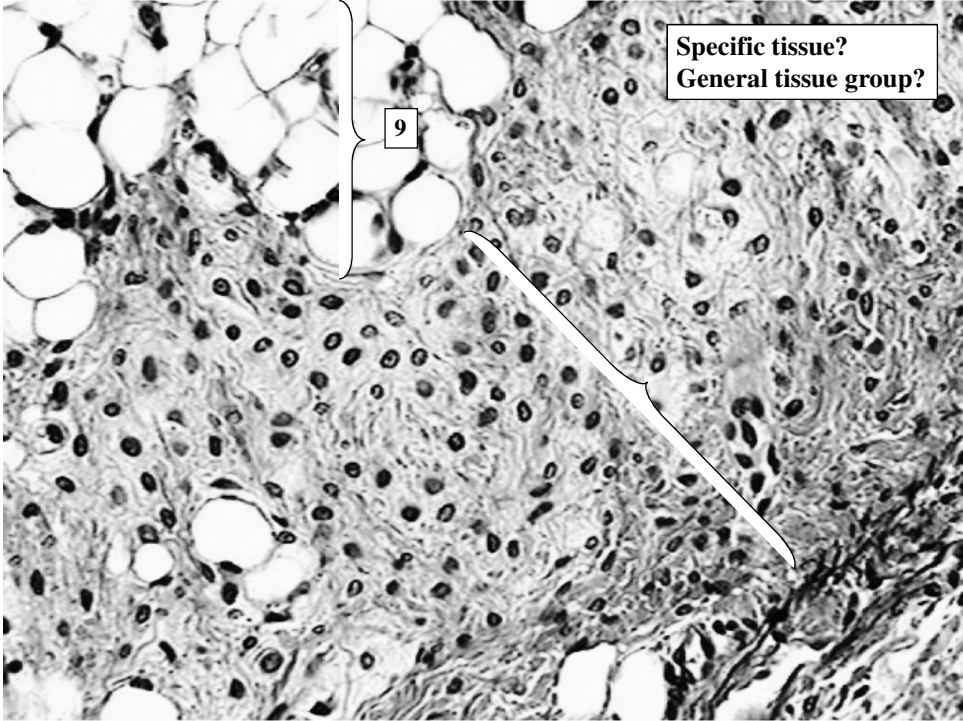












Connective Tissue Answers slides 3-18

- Slide 3: Specific tissue- Areolar tissue
General tissue group- True connective tissue
- Slide 4: Specific tissue- Areolar tissue
General tissue group- True connective tissue
- Slide 5: Specific tissue- Adipose tissue
General tissue group- True connective tissue
- Slide 6: Specific tissue- Adipose tissue
General tissue group- True connective tissue
- Slide 7: Specific tissue- Reticular tissue
General tissue group- True connective tissue
- Slide 8: Specific tissue- Dense regular connective tissue
General tissue group- True connective tissue
- Slide 9: Specific tissue- Dense regular connective tissue
General tissue group- True connective tissue

Connective Tissue Answers slides 3-18

- Slide 10: Specific tissue- Dense irregular connective tissue
General tissue group- True connective tissue
- Slide 11: Specific tissue- Dense irregular connective tissue
General tissue group- True connective tissue
- Slide 12: Specific tissue- Dense irregular connective tissue
General tissue group- True connective tissue
- Slide 13: Specific tissue- Hyaline Cartilage
General tissue group- Supportive connective tissue
- Slide 14: Specific tissue- Hyaline Cartilage
General tissue group- Supportive connective tissue
- Slide 15: Specific tissue- Fibrocartilage
General tissue group- Supportive connective tissue
- Slide 16: Specific tissue- Fibrocartilage
General tissue group- Supportive connective tissue

Connective Tissue Answers slides 3-18

Slide 17: Specific tissue- Elastic Cartilage

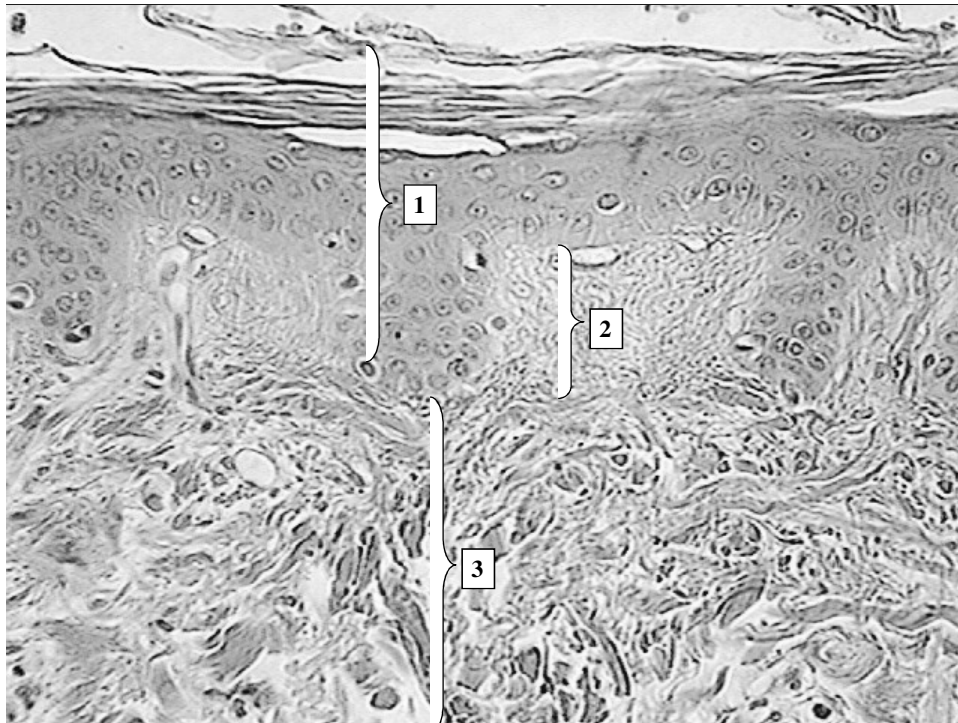
General tissue group- Supportive connective tissue

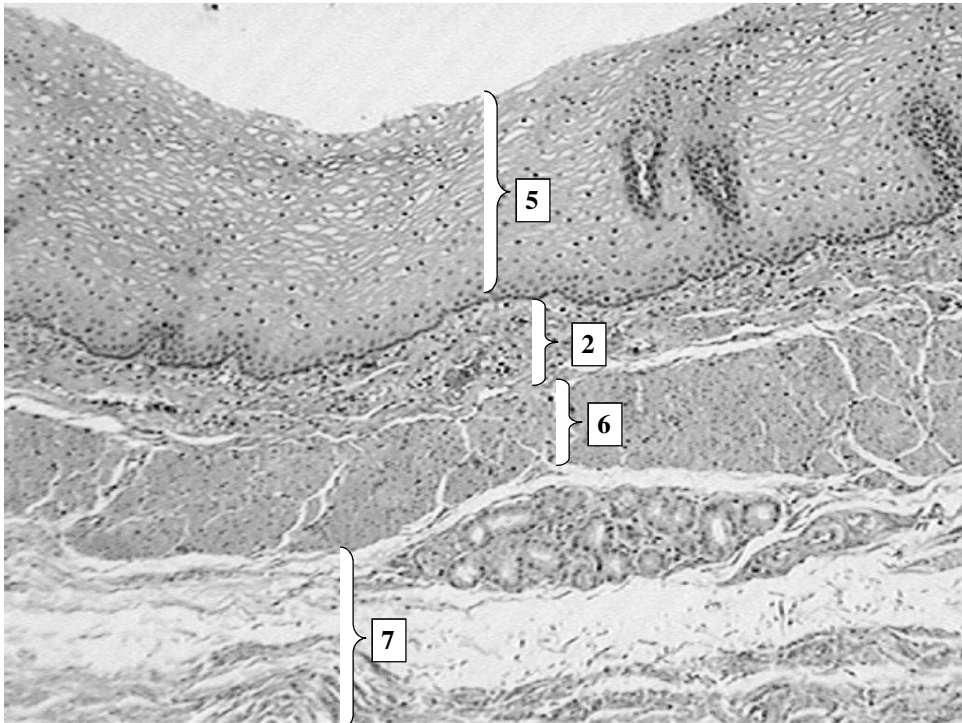
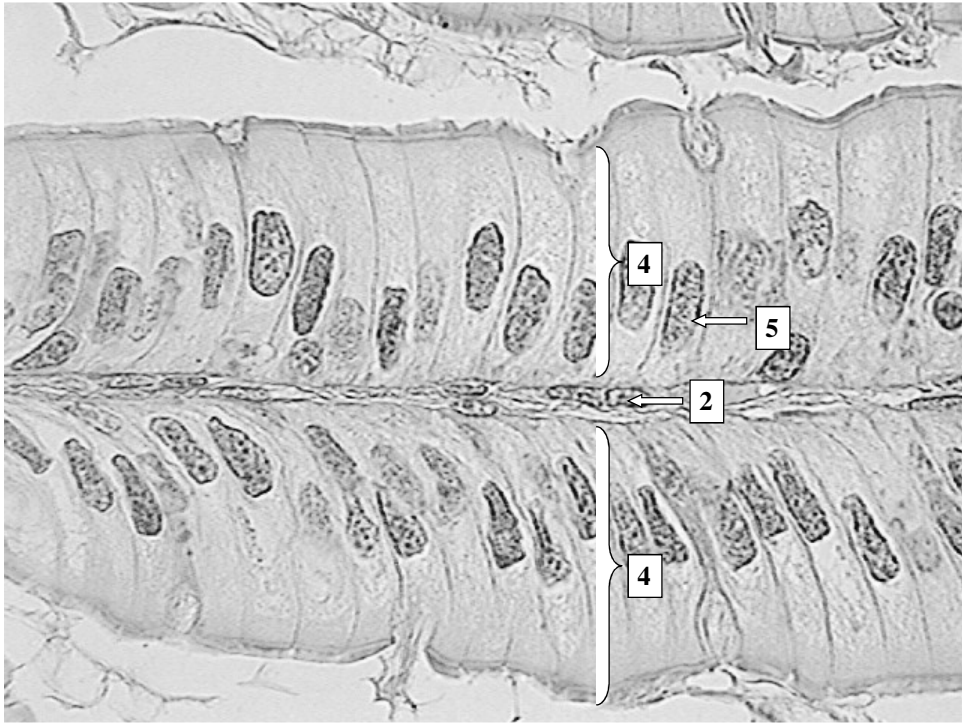
Slide 18: Specific tissue- Elastic Cartilage

General tissue group- Supportive connective tissue

Structures indicated by arrows:

1. Elastic fiber
2. Collagen fiber
3. Fibrocyte nucleus
4. Reticular fibers
5. Nucleus of adipocyte
6. Lymphocyte nucleus
7. Lacuna
8. Chondrocyte nucleus
9. Adipose tissue





Connective Tissue Answers slides 21-23

Slide 21: Human scalp

Slide 22: Transverse section of small intestine

Slide 23: Esophagus

Structures or tissues indicated by arrows and brackets:

- 1. Keratinized Stratified Squamous**
- 2. Lamina propria containing areolar tissue**
- 3. Dermis containing dense irregular connective tissue**
- 4. Intestinal villus containing simple columnar epithelium**
- 5. Non-Keratinized Stratified Squamous**
- 6. Layer of smooth muscle**
- 7. Submucosa containing dense irregular connective tissue**